



# Integrated Information Technology Services (IITS)

---

## DIY Guide

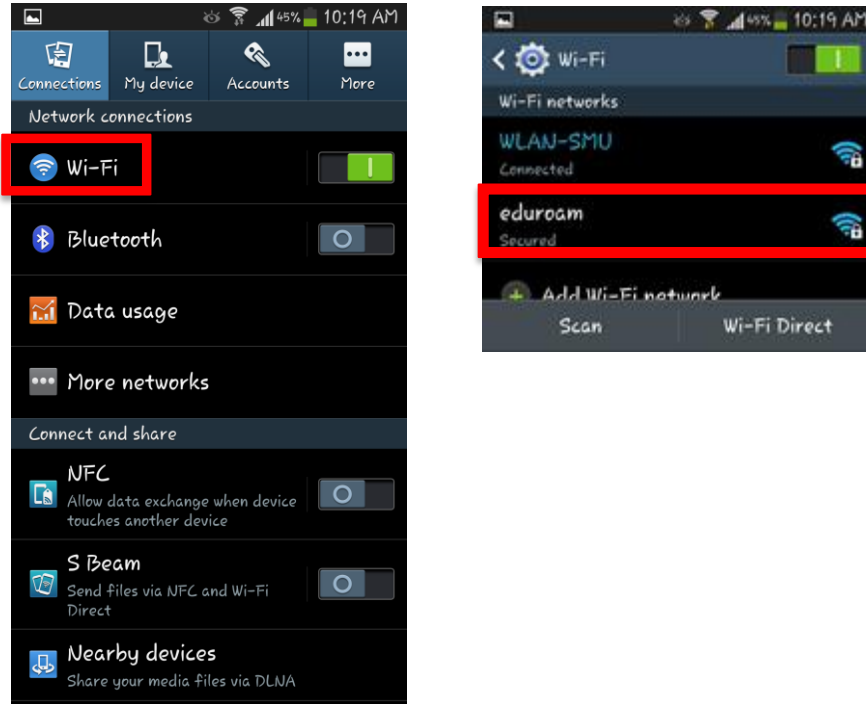
Connect to **eduroam** Wireless Network On  
Android Devices

---

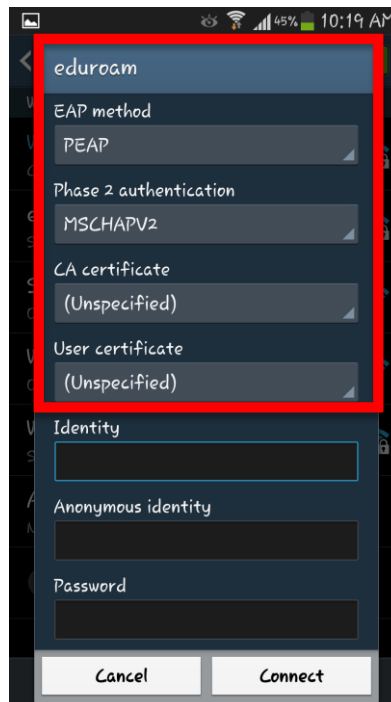
## Configuring Android Devices to Access Internet via “eduroam”

(Reference Device: Samsung Galaxy S Android 4.2)

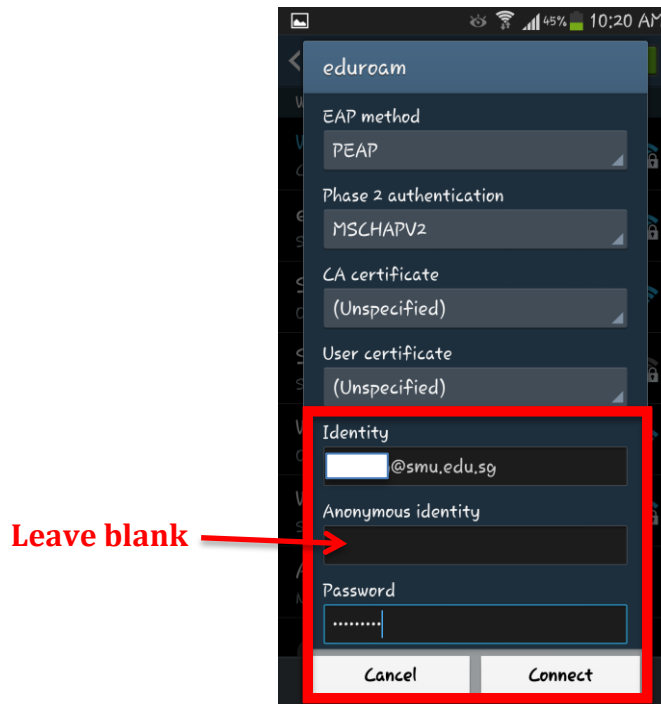
1. Click on Settings > Wi-Fi and then click on **eduroam**.



2. Ensure the settings are as follows:-



3. Key-in your SMU email address and password:-



Example:

Faculty/Staff:- username will be [xxxx@smu.edu.sg](mailto:xxxx@smu.edu.sg)

Student:- username will be [xxxx@business.smu.edu.sg](mailto:xxxx@business.smu.edu.sg), [xxxx@sis.smu.edu.sg](mailto:xxxx@sis.smu.edu.sg), etc.

4. Click **Connect** button.

5. You are now connected to the “**eduroam**” network.

