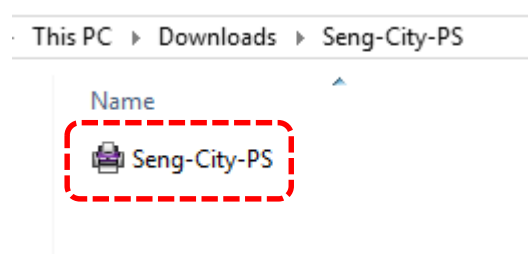


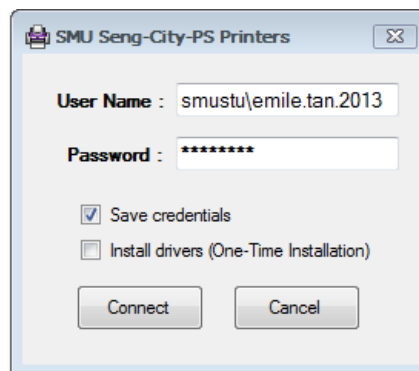
>>> Self-help Guide <<<

SMU Seng-City-PS Printers Setup Utility (Monopcla4, Monopcla3, ColorA4, ColorA3)

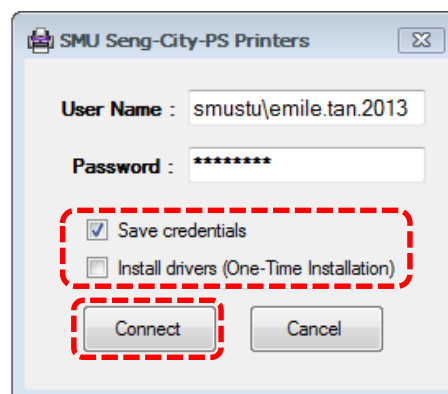
1. This guide assumes you have downloaded the "Seng-City-PS Setup" folder and all its contents.
2. Go into the downloaded "Seng-City-PS Setup" folder and double-click on "Setup" to install the SMU Seng-City-PS printers.



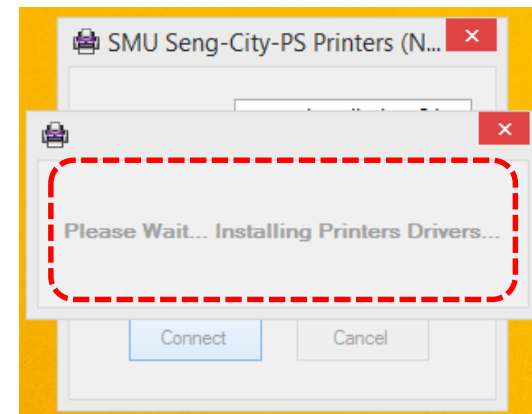
3. You will be prompted to key in your SMU user id and password.



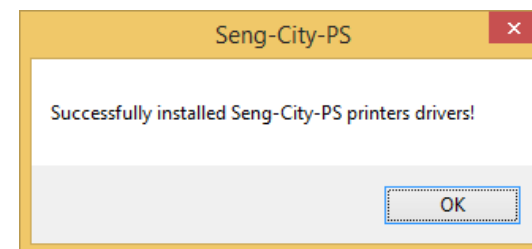
4. Key in your SMU user id and password, you can save your credentials for future use. For first time setup, check **Install drivers (One-Time Installation)** box to install SMU Seng-City printers. And then click **Connect**.



5. Please wait while installing printer drivers.



6. Below message will be prompted once installation done. Click **Close** and **OK** to exit from the application.



**Note: every time after shutdown or restart your computer, before proceed to send the print job, run this application but no need to install drivers (refer to step 4) again.*