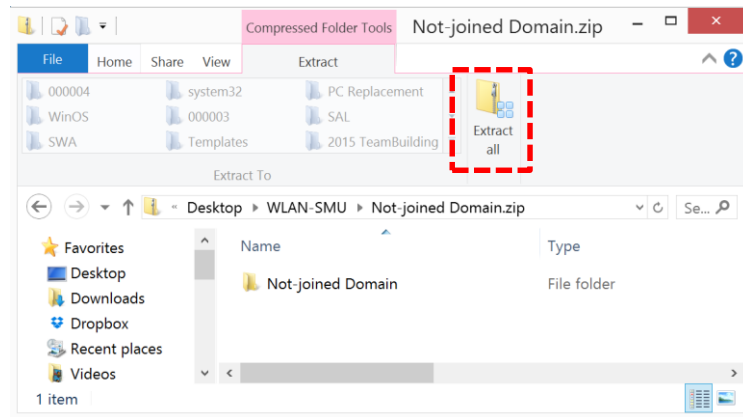


>>> Self-help Guide <<<

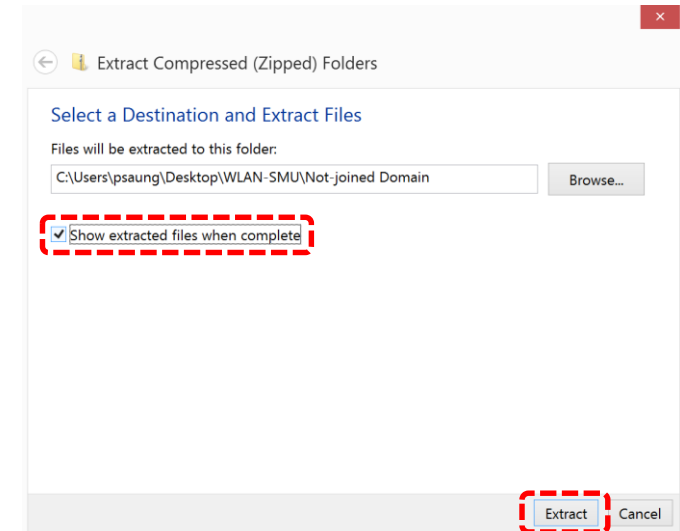
Configure SMU Wi-Fi (WLAN-SMU)

Reference OS: Windows 8.1

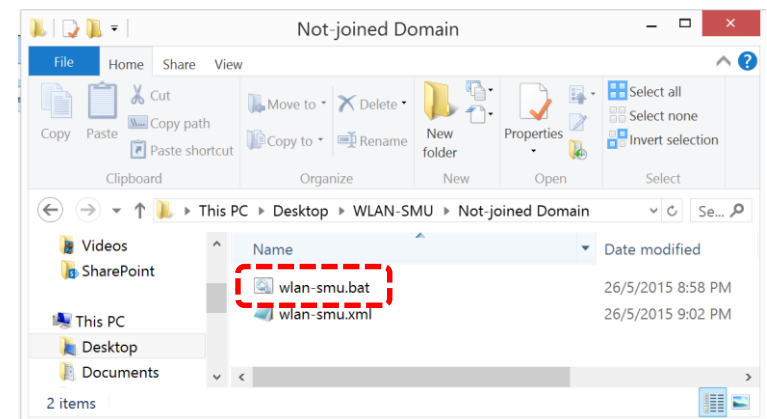
1. Double click on the downloaded folder. A window will appear, click on “**Extract all**”.



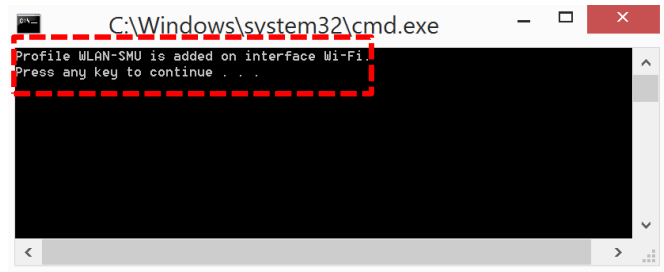
2. Ensure a check mark is set on **Show extracted files when complete** and click on **Extract**.



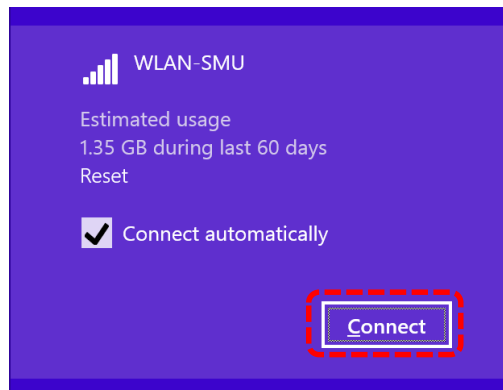
3. In the window that appears, double click on **wlan-smu.bat**.



4. A window will appear informing you that the profile for WLAN-SMU has been added. Click any key to close out the window.



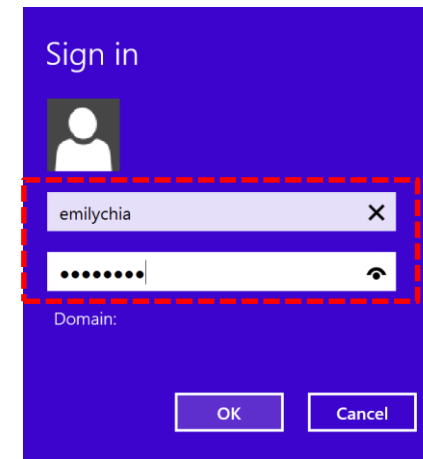
5. Click on Wi-Fi icon from Taskbar, Click on WLAN-SMU and click on Connect.



- In **Windows 7**, a pop up window will appear in the taskbar. Click on it.



6. A login box will appear. Enter your SMU ID and password, and click OK.



7. Once user authentication successful, Windows will display a “**Connected**” message.

