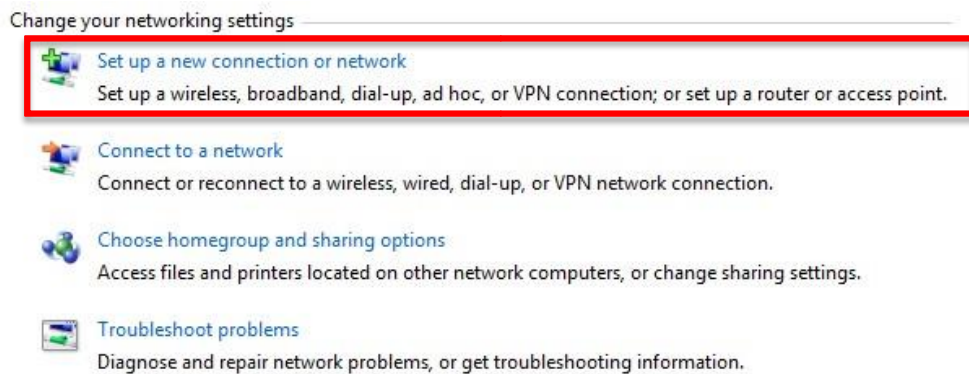

DIY Guide
Connect to **eduroam** Wireless Network On
Windows OS

Configuring Windows Notebooks to Access Internet via “eduroam”

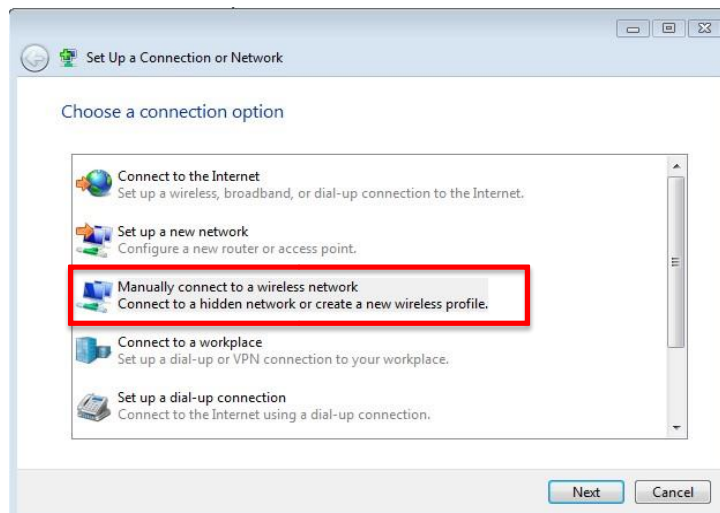
1. On your lower right hand side of the screen right-click the Wi-Fi icon. Then choose “**Open Network and Sharing Center**”.



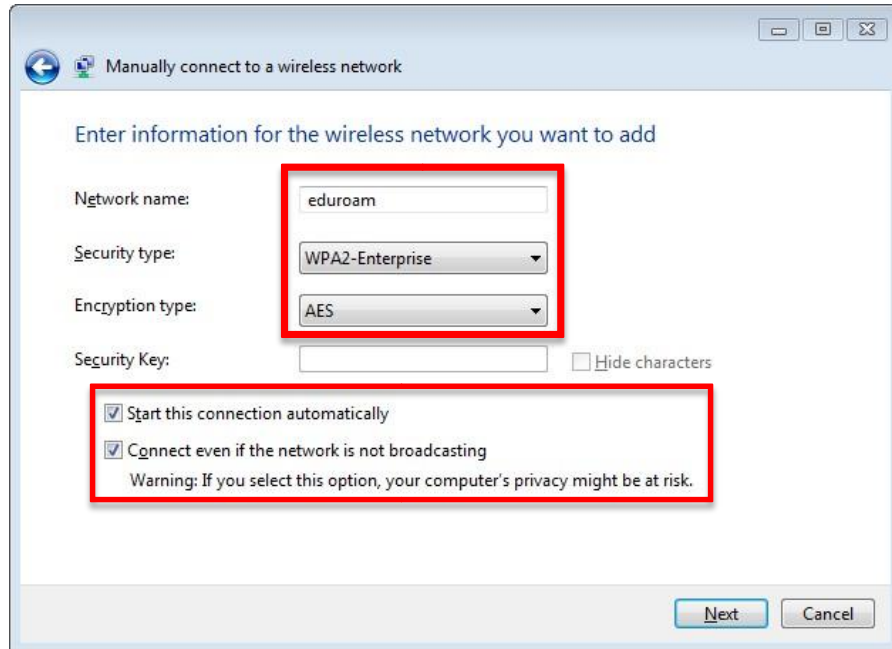
2. On the Network and Sharing Center choose, “**Setup a new connection or Network**”.



3. Choose “**Manually connect to wireless network**” and click **Next**.



4. Follow the same settings as shown, and click **Next**.

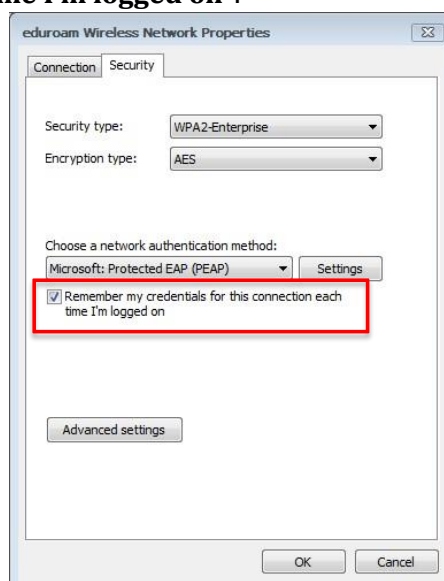


5. After successfully added **eduroam** profile click, “**Change connection settings**”.

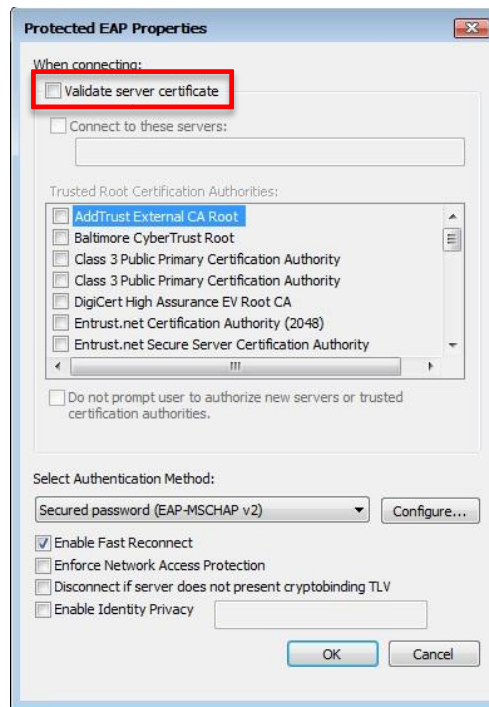
Successfully added eduroam



6. On the eduroam Wireless Properties make sure you have checked the “**Remember my credentials for this connection each time I’m logged on**”.

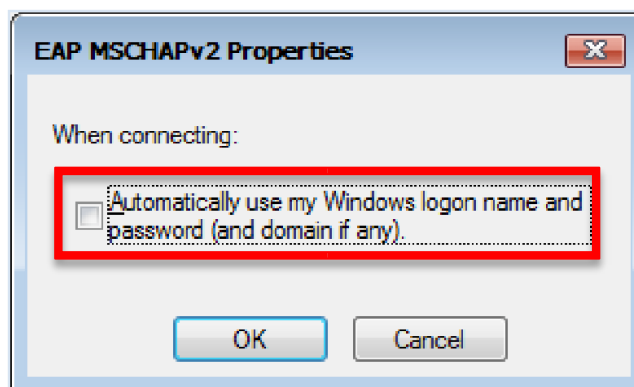


7. Click **Settings**. Uncheck, “**Validate server certificate**”.

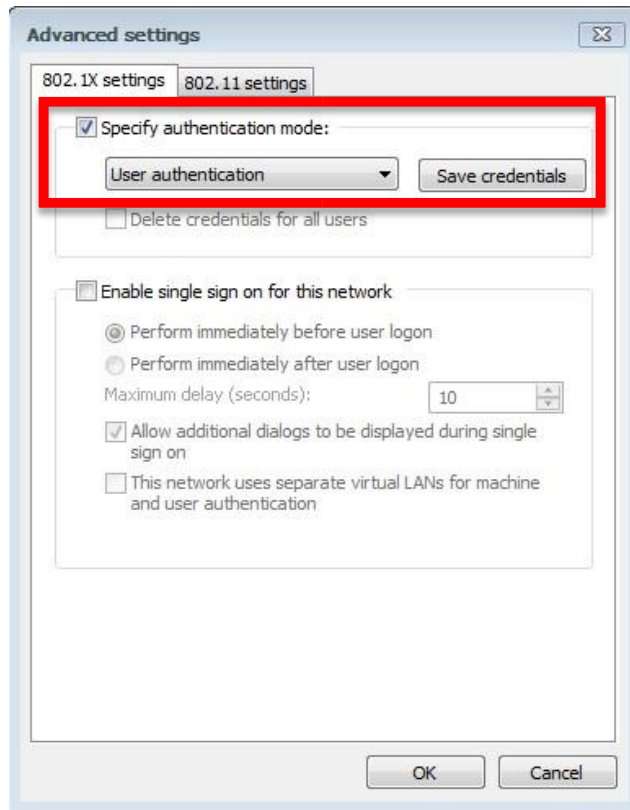


Very Important to Note (For Windows 7 Domain Joined Machine)

8. Click on **Configure**. Uncheck, “**Automatically use my Windows logon name and password (and domain if any)**”. Click **OK** twice.



9. Click **“Advance settings”**. At the **“802.1x settings”** tab, put a check on, **“Specify authentication mode”**. Then choose, **“User Authentication”**.



10. Click **“Save credentials”**, key-in your Institute email address and password, then click **OK** all the way and you should be able to connect to the **eduroam** network.

