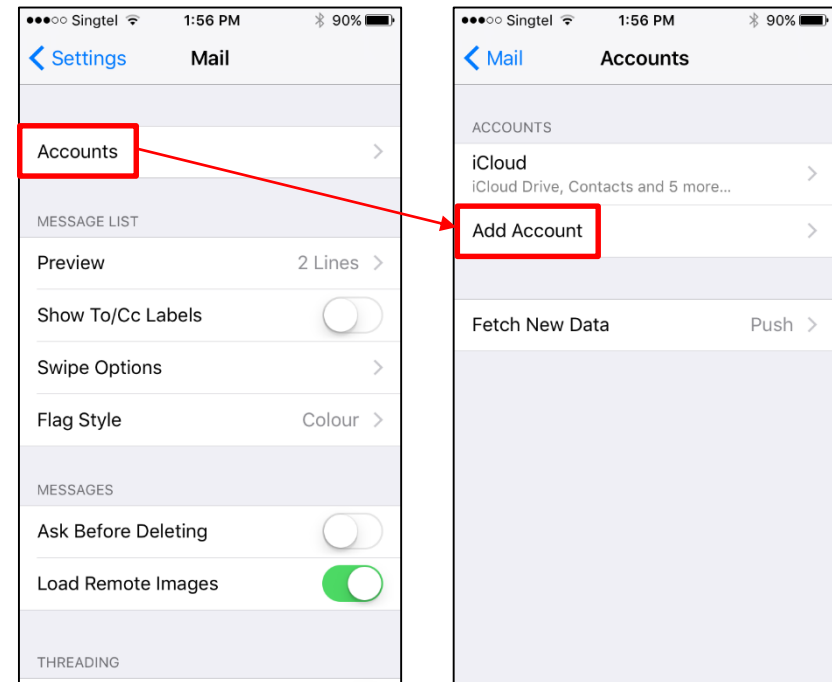


>>> Self-help Guide <<<  
Setup SMU Email on iOS  
(iOS Version: 10.2)

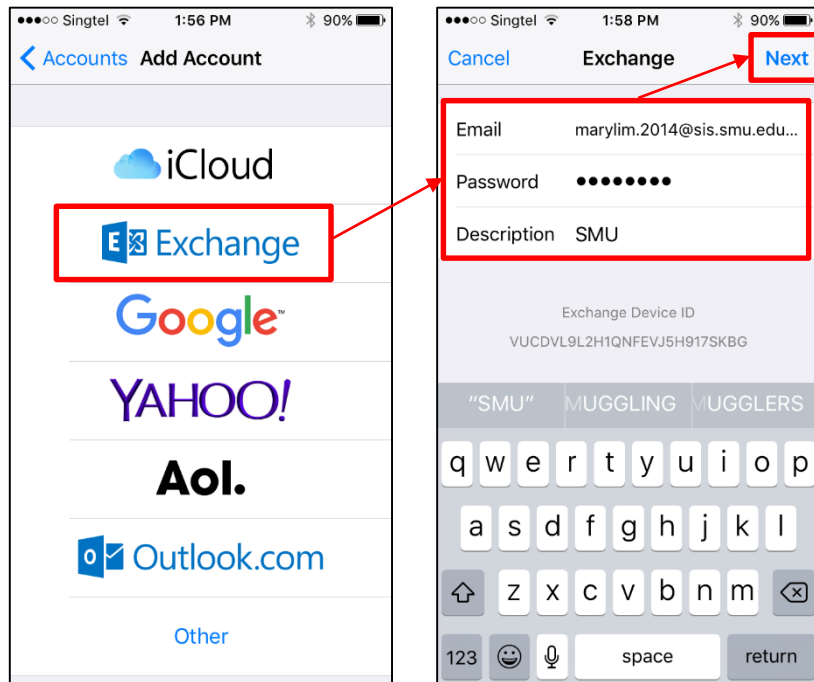
1. From the **Home** screen, tap **Settings** > **Mail**.



2. From the **Mail** screen, tap **Accounts** > **Add Account**.



3. Tap **Exchange** and enter your email address, password, and an optional description. Then tap **Next**.



4. Make your selections and tap **Save**.

