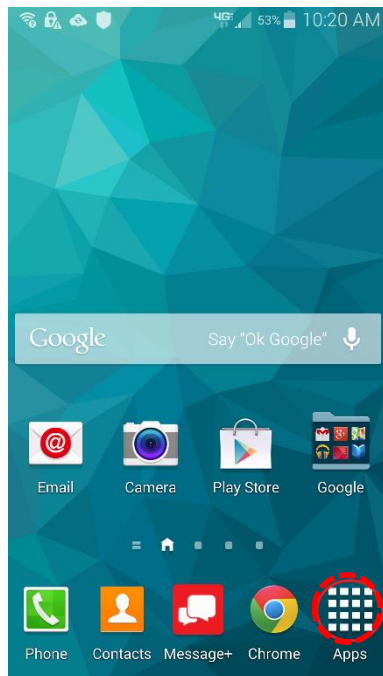


Setup SMU Email on Android OS

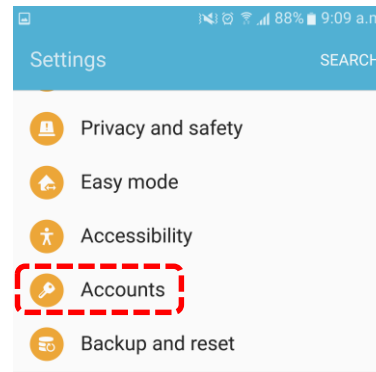
>>> Self-help Guide <<< Setup SMU Email on Android OS (Android Version: 6.0.1)

1. From the **Home** screen, tap the **Apps** icon and then **Settings**.

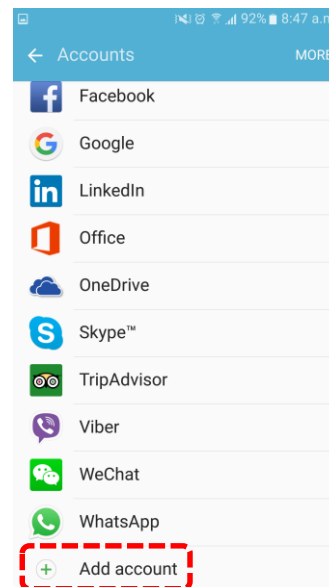


t

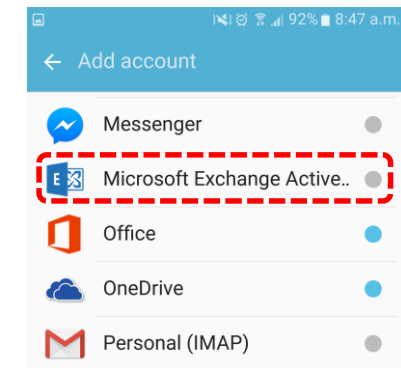
2. Scroll down and select **Accounts**.



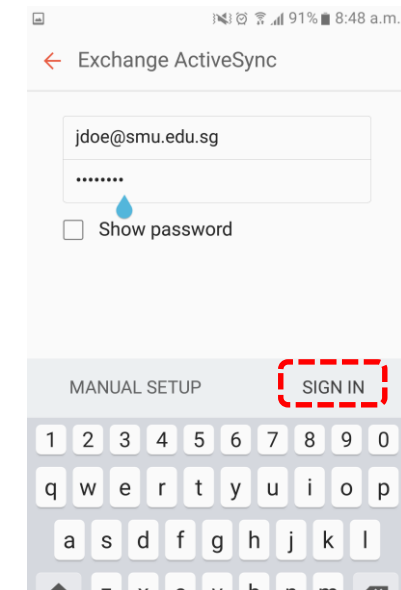
3. Select **Add account**.



4. Select **Microsoft Exchange ActiveSync**.

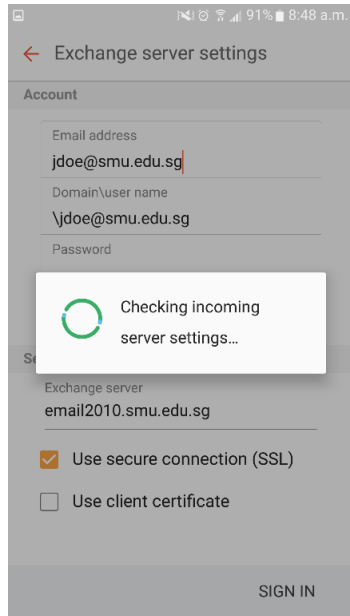


5. Fill out the account details and select **SIGN IN**.

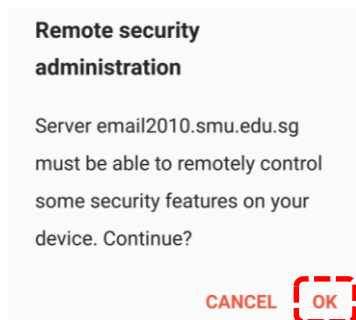


Setup SMU Email on Android OS

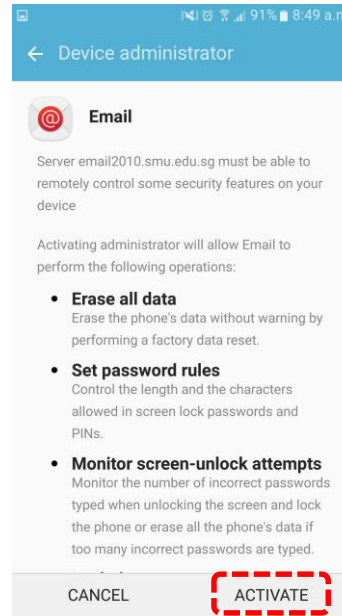
6. It will check the Email server settings automatically.



7. Select **OK** at the Remote security administration windows.



8. Select **ACTIVATE** at the Device administrator windows.



9. Your SMU Email is now configured in your Android device. To access SMU Email, tap the Email icon in your device to manage your email.

