

Setting up the SMU Network Printers (Mac OS)

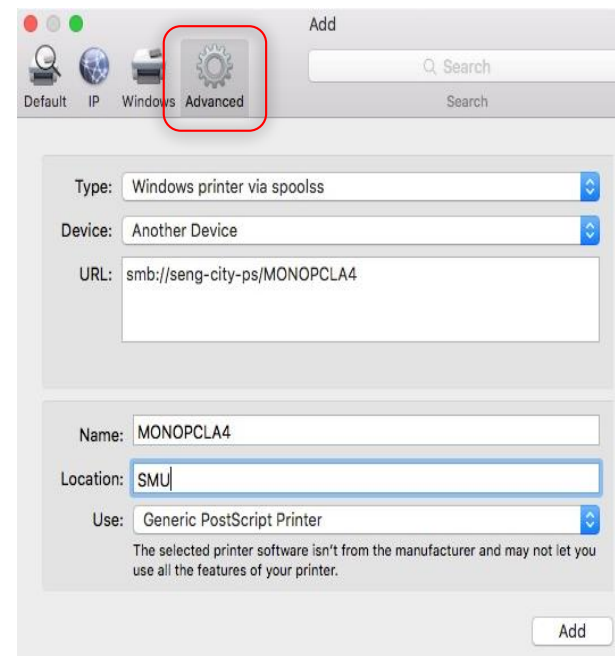
Step 1: Go to Apple Menu, Select Preference and Click on “Printers & Scanner”.



Step 2: Click [+] sign to add the printer(s).



Step 3: Select “Advanced” from the top menu bar.



- **Type:** Windows printer via spoolss
- **Device:** Another Device
- **URL:** smb://seng-city-ps/PrinterQueue
PrinterQueue:
: MONOPCLA4 (B/W A4 Size)
: MONOPCLA3 (B/W A3 Size)
: COLORA4 (Color A4 Size)
: COLORA3 (Color A3 Size)
- **Name:** **MONOPCLA4**
PrinterQueue:
: MONOPCLA4 (B/W A4 Size)
: MONOPCLA3 (B/W A3 Size)
: COLORA4 (Color A4 Size)
: COLORA3 (Color A3 Size)
- **Location:** **SMU**
- **Use:** **Generic PostScript Printer**
- **Click ADD**

Step 4: Tick Duplex Printing Unit



- **Tick Duplex Printing Unit**
- **Click OK**