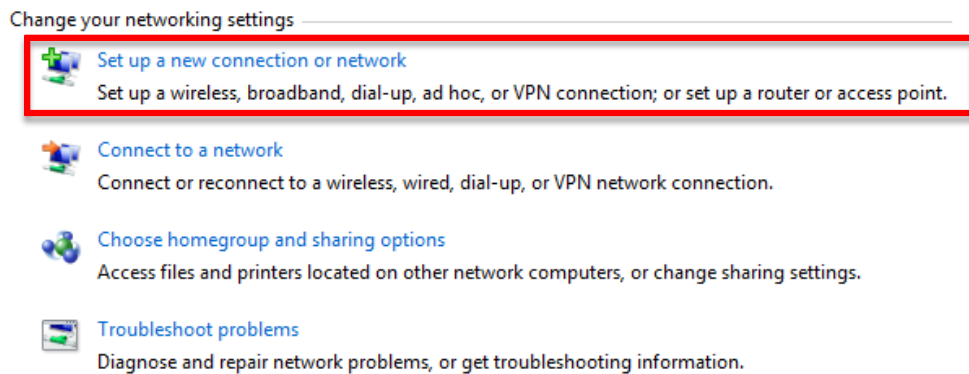

DIY Guide
Connect to **eduroam** Wireless Network On
Windows OS

Configuring Windows Notebooks to Access Internet via “eduroam”

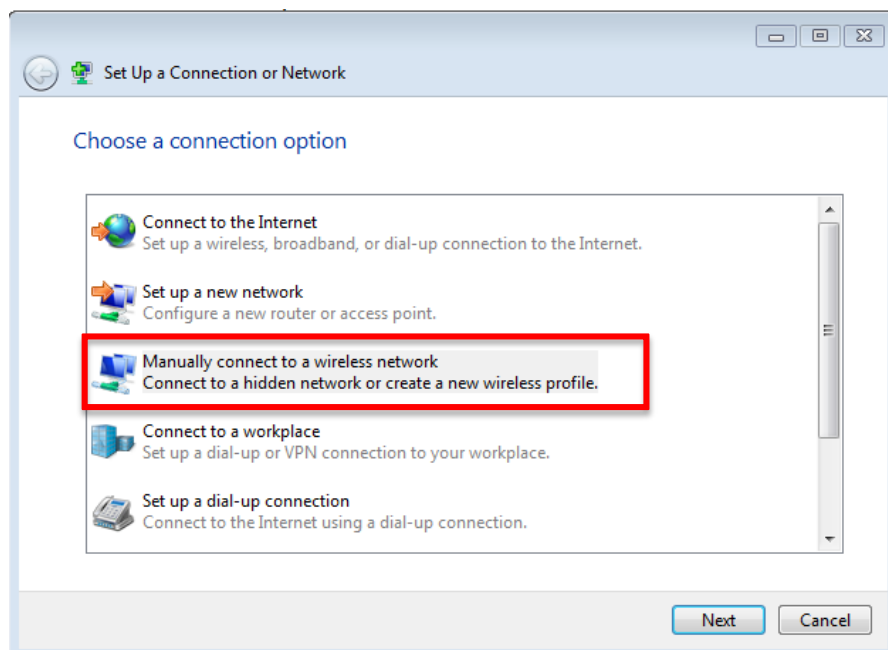
1. On your lower right hand side of the screen right-click the Wi-Fi icon. Then choose **“Open Network and Sharing Center”**.



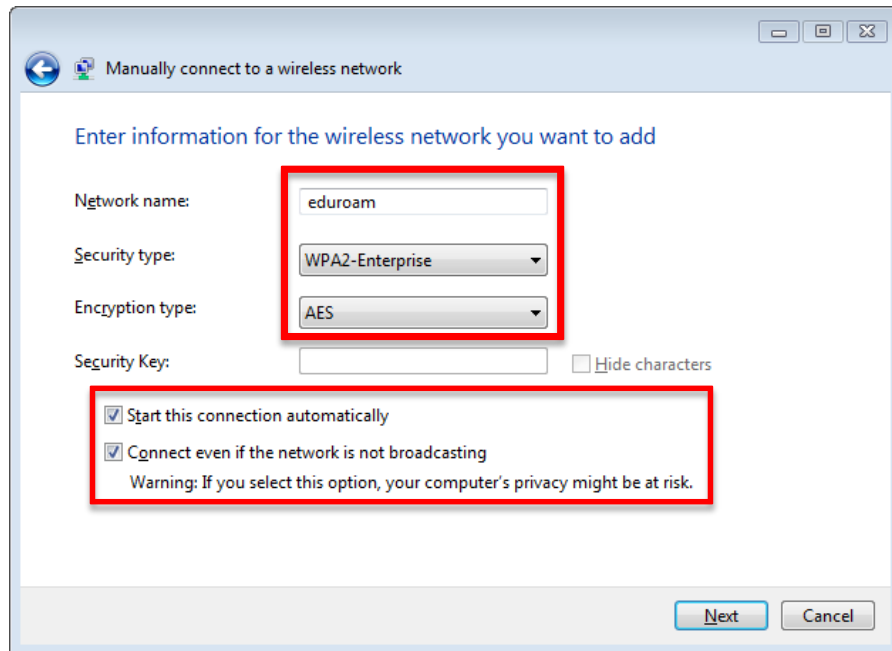
2. On the Network and Sharing Center choose, **“Setup a new connection or Network”**.



3. Choose **“Manually connect to wireless network”** and click **Next**.

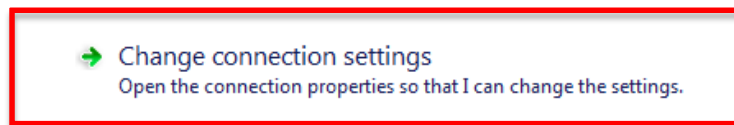


4. Follow the same settings as shown, and click **Next**.

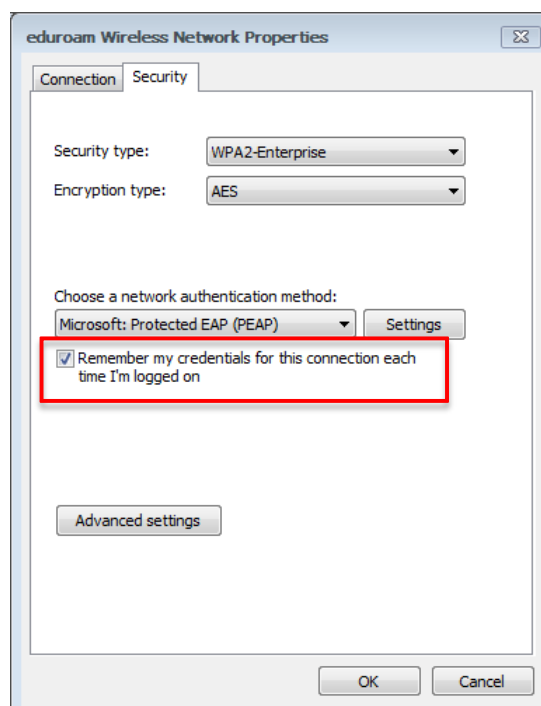


5. After successfully added **eduroam** profile click, “**Change connection settings**”.

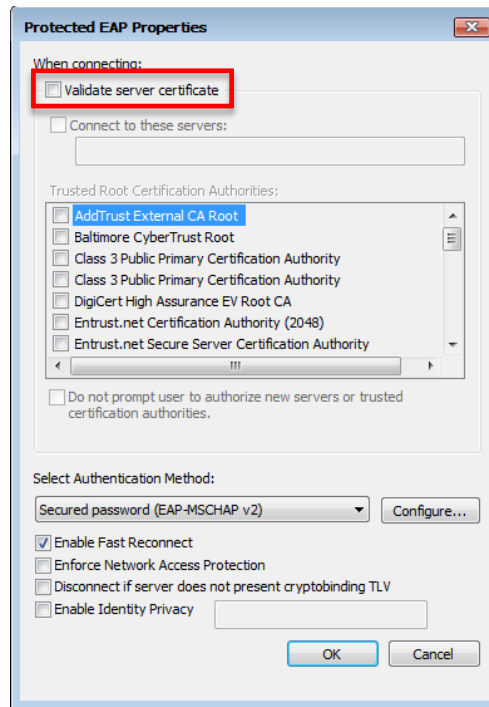
Successfully added eduroam



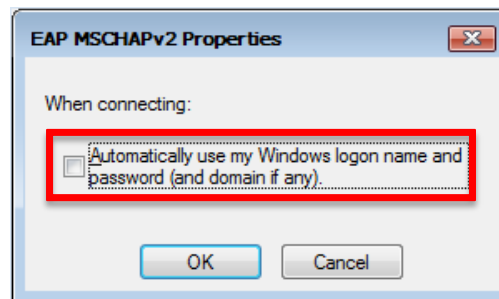
6. On the eduroam Wireless Properties make sure you have checked the “**Remember my credentials for this connection each time I’m logged on**”.



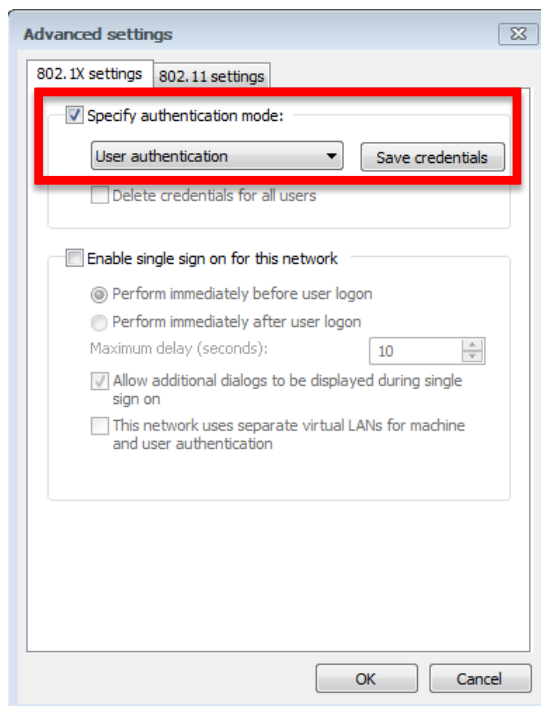
7. Click **Settings**. Uncheck, “**Validate server certificate**”.



8. Click on **Configure**. Uncheck, “**Automatically use my Windows logon name and password (and domain if any)**”. Click **OK** twice.



- Click “**Advance settings**”. At the “**802.1x settings**” tab, put a check on, “**Specify authentication mode**”. Then choose, “**User Authentication**”.



- Click “**Save credentials**”, key-in your Institute email address and password, then click **OK** all the way and you should be able to connect to the **eduroam** network.

